

I-DIF 20 and I-DIF 35

High diffusing PET films



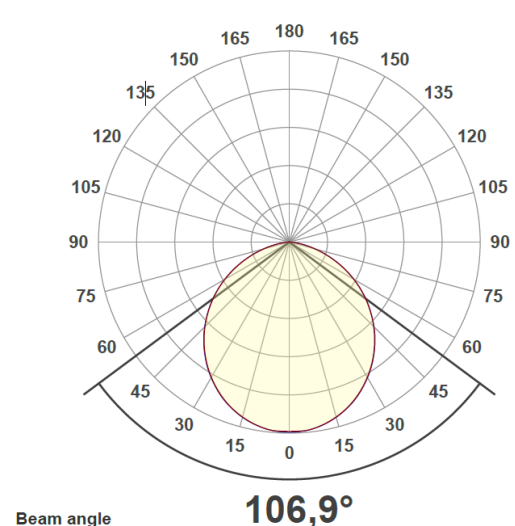
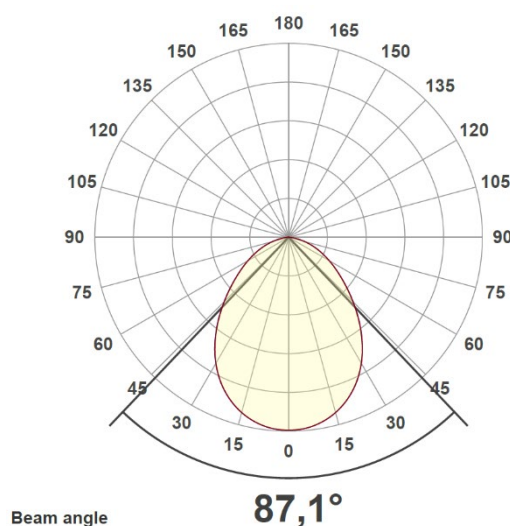
Advantages

- Delivers up to 99% light transmittance for maximum brightness and energy efficiency.
- Provides uniform light distribution for smooth and consistent illumination.
- Supports creative and compact designs with its thin, flexible material.
- Works effectively in both edge-lit and direct-lit LED lighting systems.

I-DIF is a high-performance diffusive film designed to evenly distribute light and maximize brightness in LED lighting systems. With up to 99% light transmittance, it enhances illumination while supporting both edge-lit and direct-lit designs. Its thin, flexible structure allows for creative design and efficient production.

Product data

Material	PET
Standard dimensions	I-DIF20: 1220 mm (width) x roll I-DIF35: 1000 mm (width) x roll
Thickness	±0,1mm ±10%
Refractive index	1,575
Tensile strength	75 MPa
Transmittance	99% and 67,6%
HWHM	20° and 35°
Temperature range	-40°C to +80°C



Measured light distribution curve, I-DIF 20 & I-DIF 35

■ C0/C180

■ C90/C270

*Datasheet is made on behalf of producer's information. Ingemann Components A/S cannot guarantee the authenticity of the data.

CONTACT US

For inquiries, feel free to contact us at: +45 46186644 or sales@ingemanncomponents.com

A LEDiL Group company